



ETHER METALIKA

**ASE Group proudly presents its
Ether manufacturing unit**

www.aseengineers.in

MILLING SOLUTIONS FOR RICE PROCESSING



ETHER METALIKA PRIVATE LIMITED

Engineered to perfection, powered by trust

ETHER METALIKA

PRIVATE LIMITED

MISSION & VISION

Our mission is to develop the world's finest products for our customers.

Our responsibility is to serve our customers in the best possible manner and also to contribute to the cultural advancement of society.

Our duty is to see that the company and employees mutually prosper and maintain a harmonious relationship.



THE MODERN RICE MILLING SOLUTIONS



INFRASTRUCTURE

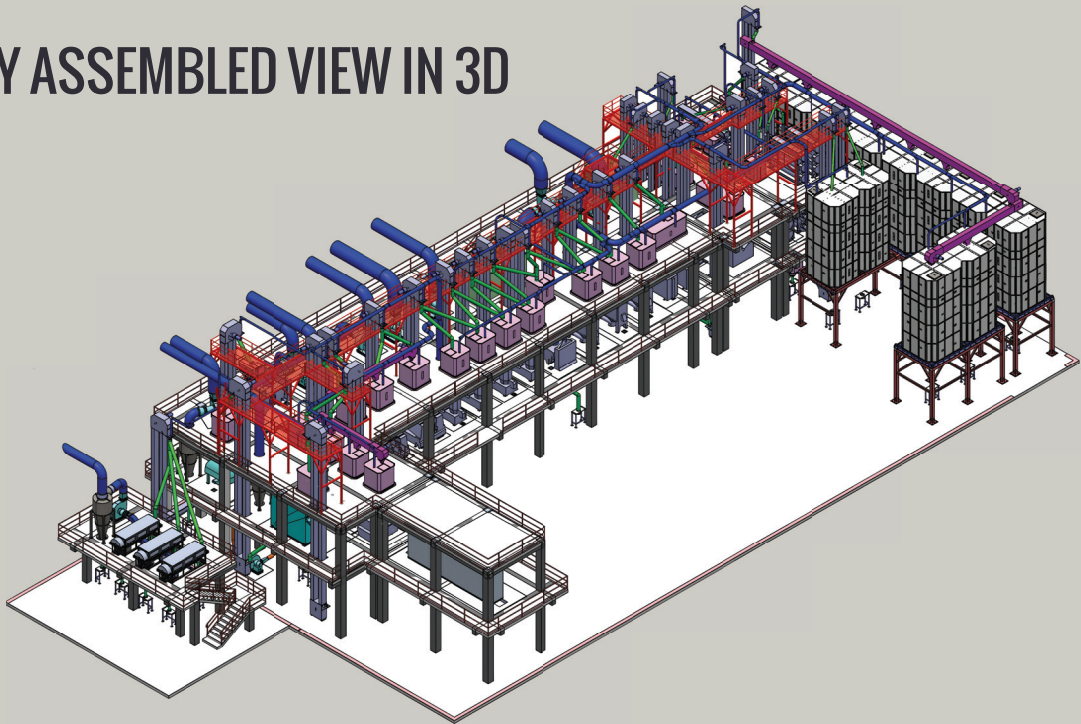
- Ether total working area 123200 sq.ft.
- Ether design centers are equipped with high-end servers and workstations complete with the latest CAD / Solid works software and tools.
- Dedicated engineering department to achieve higher yield and profitability. The service division is operated by a team of over 10 highly experienced service engineers and professionals to support our extensive client base.
- 60000 sq.ft fabrication and manufacturing facility.
- 1500 sq.ft paint facility.
- Manufacturing Capabilities include:
 - Advanced Fiber Laser machine with 6-Meter Bed
 - Advanced Automatic CNC Sheet Rolling machine
 - Advanced Laser Welding machine
 - Precision Lathe machine
 - CNC press brake
 - A dedicated engineering and technical team



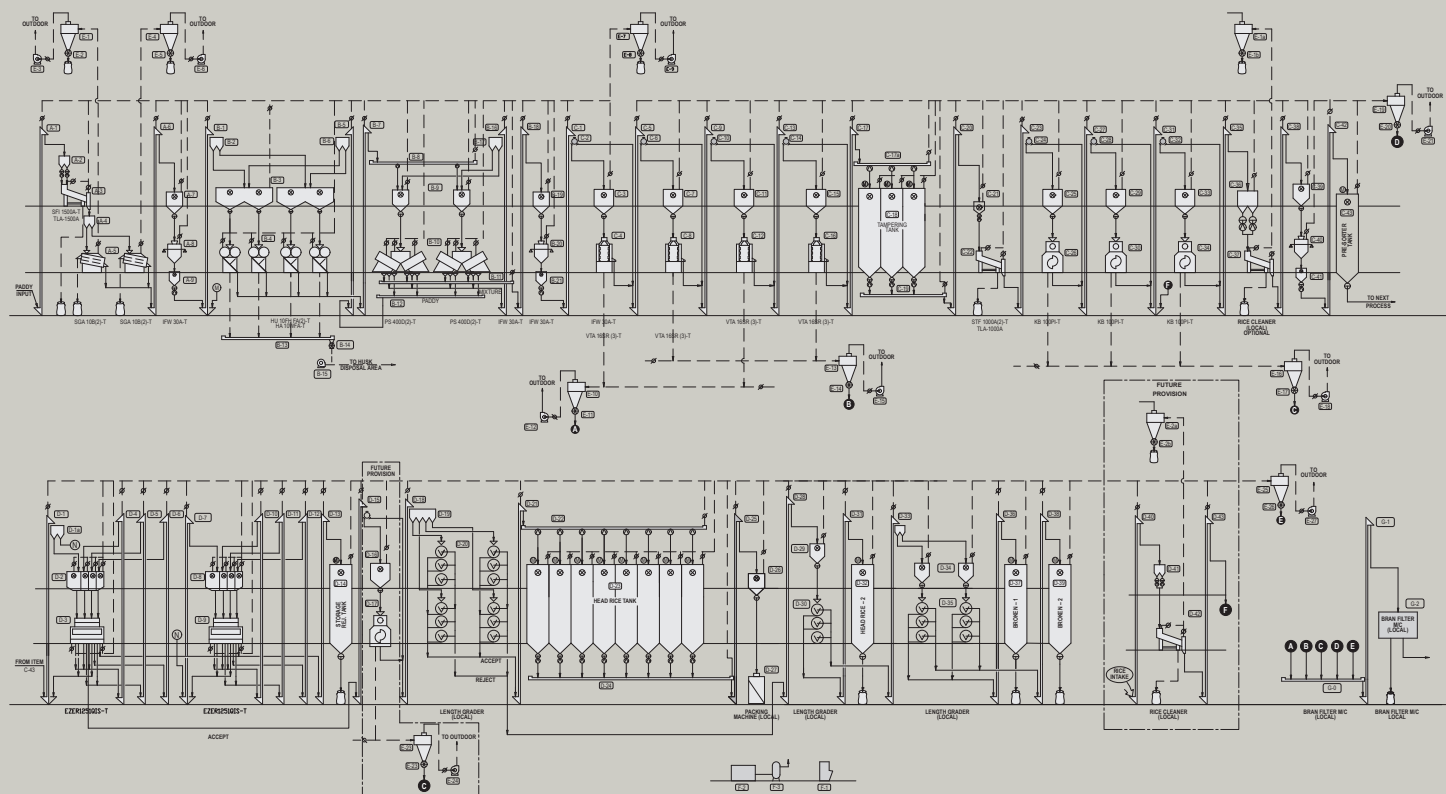
ETHER METALIKA RICE MILLING INSTALLATIONS



FULLY ASSEMBLED VIEW IN 3D



FLOW DIAGRAM OF A MODERN RICE MILL



ETHER MILLING TECHNICAL SPECIFICATIONS

MODELS	EM-4T	EM-6T	EM-8T	EM-10T	EM-12T	EM-16T	EM-20T
Plant Capacity [Ton / Batch]	4	6	8	10	12	16	20
Material of Constructions	Mild Steel	Mild Steel	Mild Steel	Mild Steel	Mild Steel	Mild Steel	Mild Steel
Total Power Required [KW / HP]	450 / 603	500 / 670	650 / 870	800 / 1072	1100 / 1475	1600 / 2145	2200 / 2950
Total Space Required [L x W ft]	100 x 40	100 x 60	150 x 80	150 x 80	200 x 100	250 x 120	300 x 150

MATERIAL HANDLING SOLUTION

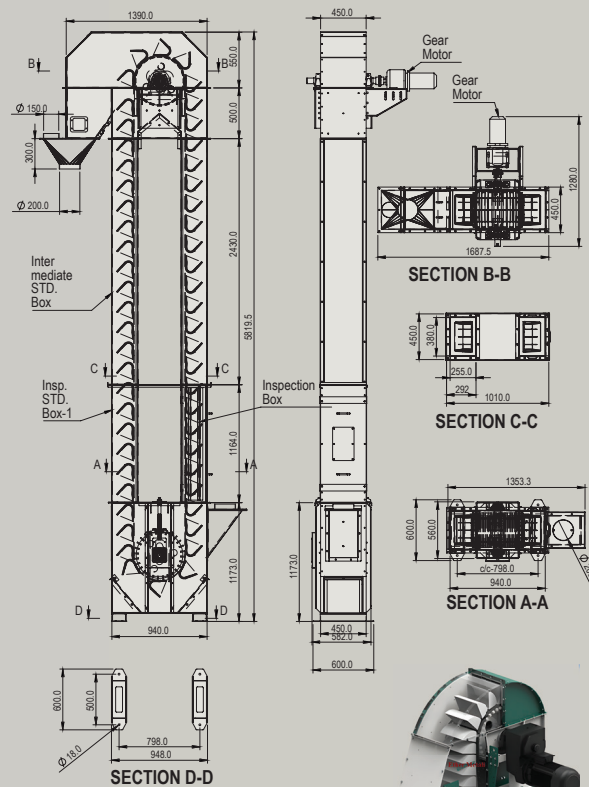
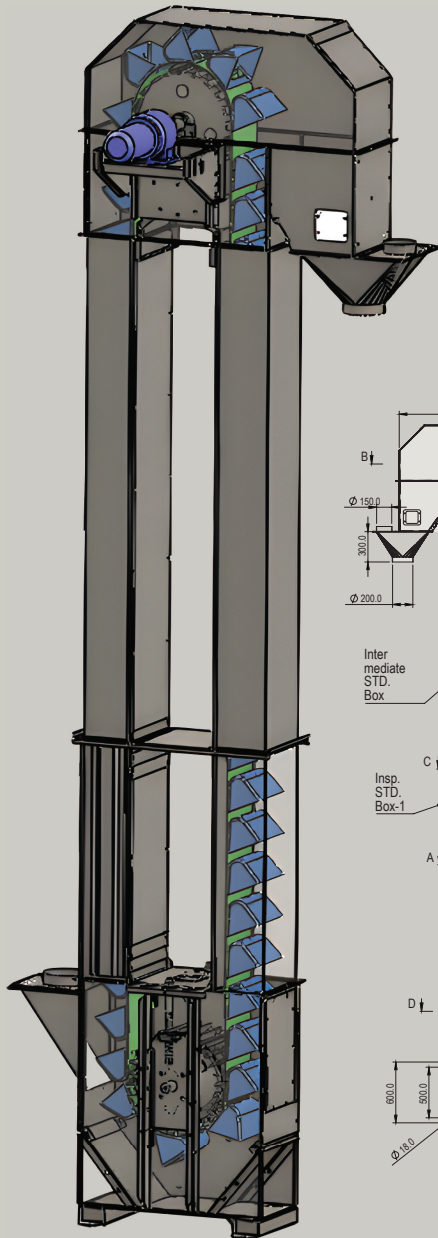
RICE ELEVATOR

All elevators are equipped with high-quality drive components, elevator belts and elevator buckets.

In combination with a solid sheet steel construction. They ensure high durability and thus protect your investment. Food-safe design possible.

Our bucket elevators are put through their paces every day around the world under the toughest conditions. They are easy and efficient to maintain thanks to variety of maintenance flaps in the head, foot and elevator shaft.

The sophisticated technical design of our elevators gives them a high load capacity.

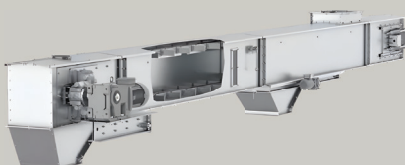
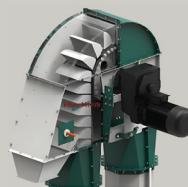


FEATURES

- Standardised modular system, suitable for various bulk materials.
- High reliability due to sophisticated technical design.
- High performance bucket systems – elevator belt resistant to oil and grease.
- Material: Mild steel with powder coated or made of stainless steel.
- Robust construction with low maintenance requirements.

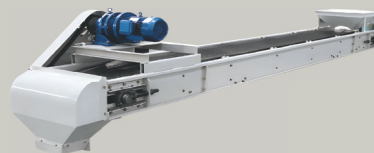
German-inspired, Zero spillage material handling

We design slow-speed elevators to avoid spillage and belt ageing complaints, our specially designed belts can be auto-tightened. Our panels are easy-to-clean materials and use unique feeding channel which reduces breakage.



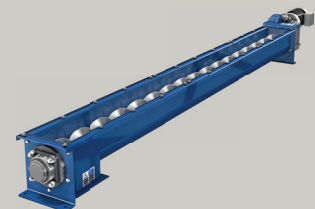
CHAIN CONVEYOR

Chain conveyors are an important type of material handling equipment used in rice mills to transport bulk materials such as paddy, grain intake sections to handle raw paddy, bulk transfer between processing units or storage bins, heavy-duty operations. Reliable in continuous operations.



BELT CONVEYOR

A belt conveyor is a mechanical handling system that consists of a continuous belt running over pulleys and driven by an electric motor. Its simple design, low maintenance, and ability to handle delicate grains with minimal damage make it ideal for rice mills.



SCREW CONVEYOR

Screw conveyors are commonly used in rice mills as a mechanical handling system for transporting bulk materials like raw paddy, bran, husk, broken rice, and other by-products. These conveyors consist of a rotating helical screw blade (called a flight) housed inside a tube or trough, which pushes the material forward through continuous rotation.

MATERIAL STORAGE SOLUTION

RICE STORAGE SILO

Grain storage silos are the best alternative for traditional storage systems. Our silos avoid storage losses like rodents, moisture, and insects. We design our silos based on the project requirements and provide ease of assembly, hygienic handling and use quality materials. Ether silos are made of high-quality steel and high-quality metal. We have highly qualified and experienced in-house engineers who provide the best service anywhere in the world. We have a dedicated project management team for every installation to ensure that installation is done according to technical specifications and on time.





HUSKER



PADDY SEPARATOR



WHITENER



POLISHER



ROTARY SIFTER



THICKNESS GRADER



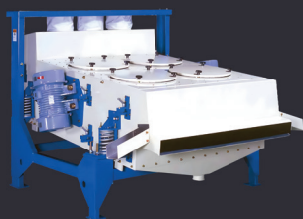
COLOR SORTER



LENGTH GRADER



RICE PACKING



PADDY CLEANER



PADDY



DESTONER



ETHER METALIKA COMPLETE RICE PROCESSING

WHITENER

SATAKE innovates continuously and creates a marvel repeatedly. The New Rice Whitener is the latest in the list. This machine improvises on existing design and incorporates various improvements to suit long grain milling in a gentle manner. Most suited for sensitive Steamed Rice for Higher Wends and Parboiled Rice for Low Temperature Milling.



FEATURES

- **Gentle Milling**
The new design of VTA machine incorporates Gentle Milling of Brown Rice over a Larger Milling Surface in the machine. This also ensures a greater Whiteness per Brake of VTA in a process.
- **Improved Bran Dissipation**
The inclusion of Secondary Air in the Milling Chamber ensures greater and much quicker removal of bran from the Screens. This provides improved performance of screens in a continuous operation.
- **Lower Milling Temperatures**
Due to improved design to Air circulation inside the Milling Chamber and greater aspiration through the bran duct. The Temperature inside the Milling Chamber is greatly reduced. This retains the good.

POLISHER

The SATAKE KB Rice Polishing Machine cleans the surface of rice, significantly enhancing the quality of finished products.

The machine has achieved a high reputation in many countries for its high performance and for the innovations which have been incorporated over the past 25 years.



FEATURES

- **Improves the appearance of rice**
The surface of milled rice becomes smooth and clean, leading to enhanced commercial value.
- **Improves the quality of rice**
The residual bran absorbs moisture and helps microorganisms to develop. By removing this residual bran, the SATAKE KB gives rice a longer shelf life.
- **Gentle polishing**
The SATAKE KB is designed to minimize breakage of rice kernels. Milling rolls and screens are chosen to best fit the material.
- **Wide applications**
Combination with other SATAKE milling equipment enables application to wide varieties of rice. Large capacity combination of upper chamber for mixing with mist water and lower chamber for polishing, the capacity has almost doubled, as compared to KB4OG-TA.

COLOR SORTOR



FEATURES

- CCD Sensor**
 Twice the precision by doubling the camera scanning speed.
- Improved Performance**
 The New Optical Sorter further enhances sorting performance for both ACCEPT and REJECT grains with improved CCD cameras and a more accurate rice-center ejecting function. The ejectors and internal structure have been optimized to improve sorting performance and throughput capacity.
- Flice-Center Detection and Ejection**
 The new Optical Sorter is equipped with a rice-center detection and ejection function which increases sorting performance and reduces contamination rates, both of bad grain in products and good grain in secondary rejected grain.

ASPIRATION DUCTS



Aspiration ducting in a rice mill is a system of pipes and ducts connected to blowers or fans, designed to create suction (negative pressure). This suction removes lightweight materials - like chaff, husk, bran, and dust - from machines such as:

- Paddy Cleaners
- Dehuskers
- Paddy Separators
- Whiteners
- Polishers

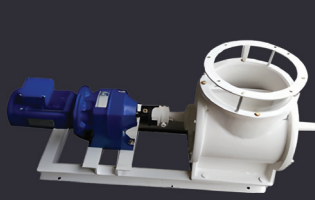
ACCESSORIES



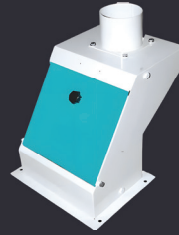
Cyclone



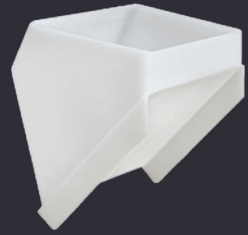
Slide Gate



Cyclone Air Lock



Magnetic Separator



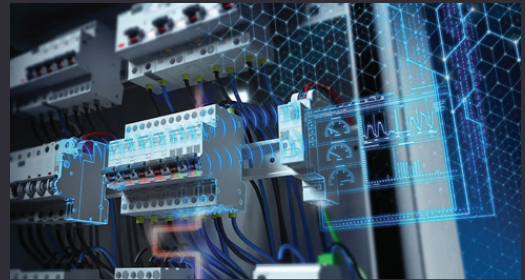
Elevator Bucket

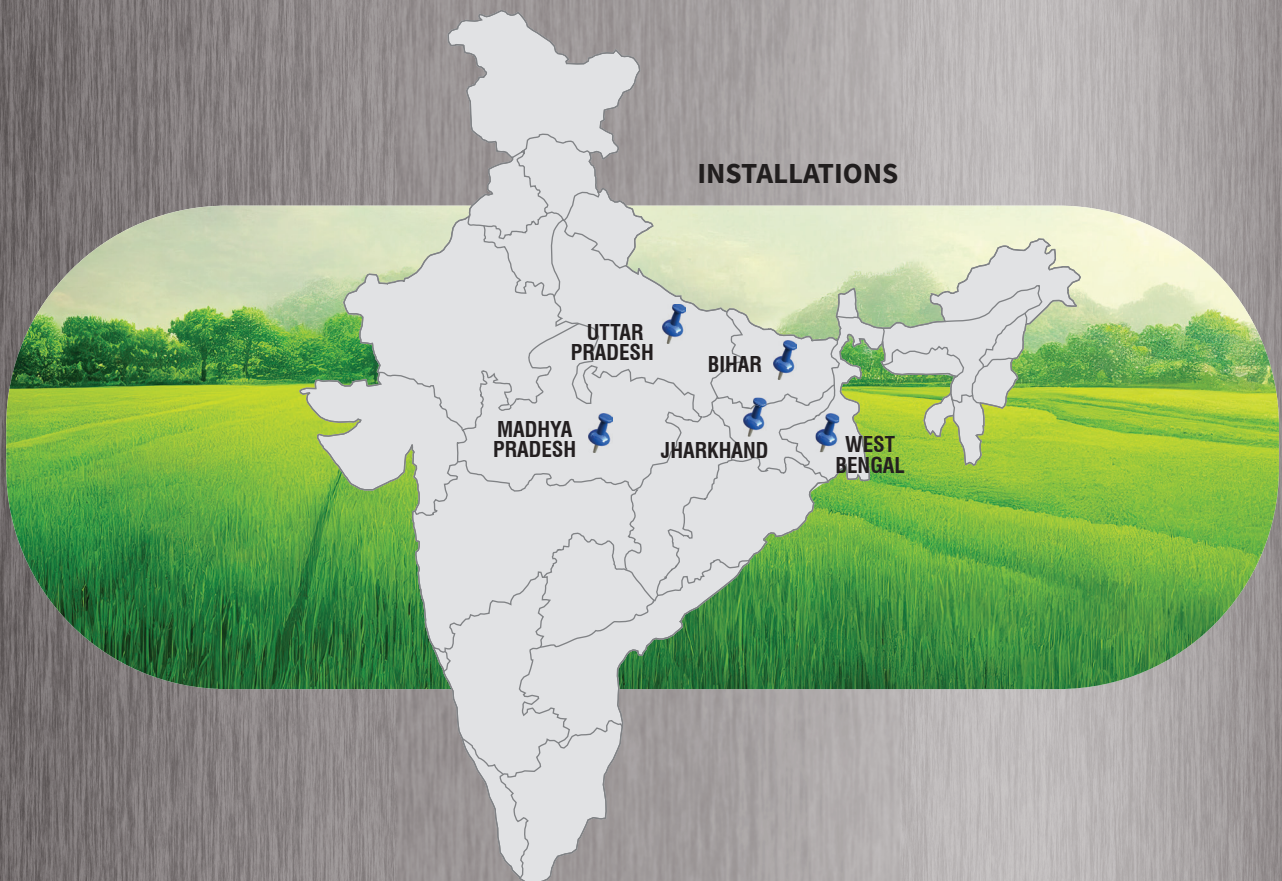
IN HOUSE ELECTRICAL PANEL MAKING

A rice mill panel board is an electrical control system that manages the various processes within a rice mill, from intake to packaging. It can be a simple starter panel or a more complex PLC (Programmable Logic Controller) panel that automates and controls numerous functions. These panels are typically housed in a metal enclosure and can be customized for different voltage and current requirements, as well as specific applications within the rice mill.

Modular Enclosure System

- Based on TS 8 platform with 16-fold profile design and a cross sectional thickness of 3 mm throughout.
- Modular, flexible and scalable design.
- Tested and design verified with the highest Impact protection of IK 10.
- Enclosure with highest static load capacity > 1400 kg.
- Tested with static and dynamic load capacity more than 2 Tonnes Modular compartment configuration for internal compartmentalization up to Form 4b Type 7.
- Simple installation and user-friendly assembly.
- Structured system solution to suit makes of switchgear like SEIMENS and SCHNEIDER.
- All tests under IEC 61439 are conducted on all power panels.
- Latest configurations of two-tier ACB and double front solution with IP 54.





OUR ESTEEMED CUSTOMERS



CONSULT ETHER METALIKA FOR A COMPLETE TURNKEY SOLUTION TO RICE MILL

ETHER METALIKA PRIVATE LIMITED

Engineered to perfection, powered by trust



Gutuwa
Ring Road, Ranchi
Jharkhand – 835 303

Near Kidzee School
Road #6-B, Rajeev Nagar
Patna, Bihar – 800 024

+91 85108 74749
+91 99588 48237
ethermetalikaprivatelimited@gmail.com



www.aseengineers.in



FROM PLANNING TO COMMISSIONING & MARKETING, ETHER METALIKA WITH YOU